



2019 Annual Cancer Report

Mission Statement	3
Chairmen and Physician Liaisons	4
2018-19 Cancer Committee	5
Chairman's Report	6
Radiation Oncology	7
Oncology Nursing	8-9
Community Outreach	10-11
Clinical Trials	12
Breast Care Center	13-14
Cancer Data Services	15
2018 Summary of Program Components	16
2018 Prospective Treatment Planning	17-19
2019 Five Major Sites	20
Graphic Presentation of Cancer Cases	21-24
HOPE Cancer Center	25
Locations	26



UTHealth
East Texas

UT Health East Texas Cancer Institute Mission Statement

We treat cancer. We care for people.

The mission of the UT Health East Texas Cancer Institute is to prevent, detect and treat cancer with dedication to the health of the people of East Texas. To accomplish this mission, we are committed to the following standards:

The UT Health East Texas Cancer Institute will ...

- Provide for the physical, emotional and spiritual needs of the patient in order to promote quality of life in a compassionate manner.
- Create superior multidisciplinary programs in order to provide the most appropriate cancer care.
- Assure a highly trained professional staff, and provide them with the best available resources and technology in order to render the most advanced patient care.
- Continually improve the quality of patient care by assessing and improving those managerial, clinical and support processes that most affect patient outcomes.
- Manage its financial and human resources in an effective manner that contributes to the fulfillment of its mission.



UT Health East Texas Cancer Program Chairmen

Beginning in 2009, the cancer program chairman serves a three-year term.

1986 - 1989	Gary Gross, MD, Medical Oncology/Hematology
1990	Dale Lakomy, MD, Radiation Oncology
1991	Gary Gross, MD, Medical Oncology/Hematology
1992	Gary Kimmel, MD, Medical Oncology/Hematology
1993	Arielle Lee, MD, Medical Oncology/Hematology
1994	Gary Gross, MD, Medical Oncology/Hematology
1995	JoAnne Carignan, MD, Medical Oncology/Hematology
1996	Mitchell Anderson, MD, Radiation Oncology
1997	Robert Droder, MD, Medical Oncology/Hematology
1998	Gary Gross, MD, Medical Oncology/Hematology
1999	Leonard DeCarlo, MD, Urology
2000	James Kolker, MD, Radiation Oncology
2001	William Lunn, MD, Pulmonology
2002	JoAnne Carignan, MD, Medical Oncology/Hematology
2003	Heidi McKellar, MD, Radiation Oncology
2004	Myrtha Basile, MD, Medical Oncology/Hematology
2005	Charlie Haas, MD, Medical Oncology
2006	Michael Klouda, MD, Diagnostic Radiology
2007	Joseph Martins, MD, Medical Oncology/Hematology
2008 - 2010	Michael Ashigbi, MD, Medical Oncology/Hematology
2011 - Present	Andrew Kulaga, MD, Pathology

UT Health East Texas Cancer Program Physician Liaisons

1986	Joseph Selman, MD, Radiation Oncology H.R. Fender, MD, Surgery
1987 - 1991	H.R. Fender, MD, Surgery
1991 - 1994	Joseph Selman, MD, Radiation Oncology H.R. Fender, MD, Surgery
1994 - 1997	Joseph Selman, MD, Radiation Oncology
1997 - 2014	H.R. Fender, MD, Surgery
2015 - 2017	Jeffrey Gilroy, MD, Radiation Oncology
2017 - Present	Bruce Ellerin, MD, Radiation Oncology

UT Health East Texas Cancer Institute 2018-2019 Cancer Committee Members

Andrew Kulaga, MD, Chairman.....	Pathology
Michael Ashigbi, MD, Past Chairman	Medical Oncology/Hematology
Bruce Ellerin, MD.....	Liaison/Radiation Oncology
Arielle Lee, MD, Conference Coordinator	Medical Oncology/Hematology
Joseph Martins, MD, Lung Conference Moderator	Medical Oncology/Hematology
Charles Haas, MD, Quality Control of Registry.....	Medical Oncology/Hematology
Michael Klouda, MD, Genetics Professional	Diagnostic Radiology/Breast Center
Thomas Grahm, MD.....	Neurosurgery
Alfred Llave, MD	Diagnostic Radiology
Thomas McGovern, MD.....	Surgery
Jose Enriquez, MD.....	Diagnostic Radiology

Ancillary Members

Cody Boyd.....	CEO, UT Health North Campus Tyler/Division Administrator of Cancer Services
Felipe Barrera, RT.....	Radiation Therapy Tech
Elissa Thompson	Marketing Strategist, Oncology
Pat Branham, RN, OCN, BSN.....	Oncology Nursing (HOPE Cancer Center)
Tawana Burgess, RN, OCN.....	Oncology Nurse/Inpatient Oncology
Blas Caroprese, PhD, DABR.....	Physics
Regina Davis.....	Cancer Institute/Breast Care Service Director
Daisy Drinkard.....	American Cancer Society
Perry Edwards.....	Chaplain
Jack Endres.....	CEO, UT Health Athens
Amy Everett, RN.....	Hospice of East Texas
Cathy Hanks, RN, OCN	Case Manager
Linda Harden.....	Rehabilitation
Stephen Hubbard, PC.....	Attorney/Member of Community
Kevin Jablonski, RN	CNO, UT Health Athens
Almarie Moore, CTR.....	Cancer Data Service Manager
Grace Loreda, PhD.....	Clinical Trials Manager
Suzanne Oliver, RDL.....	Dietary/Nutrition
Susan Oxford, LCSW, LCDC, RPE	Behavioral Health Therapist
Misty Weathers, RN.....	CyberKnife Coordinator
David Williams, RN.....	Quality Improvement Coordinator
Cynthia Willis, PharmD	Pharmacy
Carla Stuart, RN, OCN.....	Nurse, Radiation Oncology

Chairman's Report

I am pleased to share our 2019 UT Health East Texas Cancer Institute Annual Report. The American College of Surgeons Commission on Cancer (CoC) has almost 70 participating hospitals in Texas and this represents less than 17% of all hospitals in our great state. The CoC provides valuable metrics and tools for cancer centers to improve quality and personalize cancer care and we are honored to be part of this organization with a shared vision.

One of the greatest benefits of working in healthcare is the dynamic and evolving landscape of cancer care. This year has been just as exciting. We have watched our new health system grow and mature and have much better vision for what we can accomplish for the people of East Texas and for the field of work we call medicine. I feel as though we have the required infrastructure to better equip ourselves as we continue this fight with cancer. This includes our academic work in cancer prevention, our leading-edge diagnostic equipment to aid in early detection, our advanced therapeutic interventions, programs to address cancer survivorship and the "Now what?" question many patients are faced with, as well as palliative care programs.

Over the past year, we have dedicated significant time to integrating the existing cancer programs of our new health system and have made strides in continuity of care and the sharing of best practices for continual program quality improvement. UT Health East Texas is dedicated to the eradication of cancer and will continue to offer our patients new options for cancer prevention, early diagnosis and treatment. As we pursue this goal together, we will conduct new research, translate our findings into innovative therapies and investigate new ways to prevent and diagnose cancer. Together, we will continue to ensure that our patients and families we serve receive the highest level of care from diagnosis through treatment and survivorship.

In closing, I would like to send a special thank you to our Cancer Committee members. Their unending support, motivation and work ethic, coupled with top-tier patient and family care, serves as the backbone of our cancer program. Positive outcomes are directly reflected as they are the ultimate example of giving back to our community.

It's an exciting time to be a part of UT Health East Texas and a pivotal point for the people of East Texas. We look forward to providing big-city care with a small-town feel, and look forward to advancing healthcare, together.



Cody Boyd

CEO, UT Health North Campus Tyler
Division Administrator for Cancer Services, UT Health East Texas



Andrew Kulaga, MD

Chairman, Pathology



Radiation Oncology

Radiation therapy is used to destroy tumor cells while preserving surrounding normal tissue to the greatest extent possible. Radiation is often combined with surgery and/or systemic therapy, such as chemotherapy, hormonal therapy or immunotherapy, to cure or control malignant disease. In certain instances, radiation therapy alone may be the single best method for the treatment of cancer. In other situations, radiation therapy can be used as a supportive measure to reduce bleeding, pain or other symptoms.

The UT Health East Texas Cancer Institute opened in 1982 to provide radiation therapy services in East Texas. The cancer institute consists of two centers, one in Tyler and one in Athens, which service a region extending from the outskirts of Dallas to the Louisiana border and from Mt. Pleasant to Lufkin. More than 25,000 cancer patients have been treated at the cancer institute by our expert team of health specialists, which includes physicians, physicists, a dosimetrist, radiation therapists, a CT technologist, nurses and other support personnel. Our team is led by the radiation oncologist, a physician who specializes in the treatment of cancer and other conditions with radiation therapy.

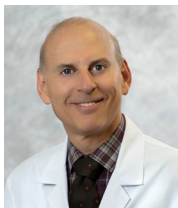
After careful discussion and review of the patient's case with the surgeon, the medical oncologist, the radiologist and/or other clinical personnel, the radiation oncologist determines which radiation therapy plan is best suited for the patient. The radiation oncologist plans the patient's treatment and carefully monitors the patient's progress during and after treatment. Once radiation treatment begins, the radiation oncologist sees the patient at least once a week.

The physicist and the dosimetrist assist the radiation oncologist by helping to design the optimal radiation treatment plan for the patient's case, insuring that therapy is delivered in the safest and most efficient manner. Their goal is to design a treatment plan that will address the tumor or area of concern as the physician intended, while at the same time sparing normal tissue as much as possible.

Radiation therapists work with the radiation oncologist to set up and deliver daily treatment on one of the high-energy linear accelerators (treatment machines) at the UT Health East Texas Cancer Institute treatment centers in Tyler and Athens.

Nurses work with the radiation oncologist to monitor the patient's well-being during treatment and to provide information and support to the patient and their family.

Every staff member at the cancer institute has one goal: to treat the patient in the most effective and compassionate way. We consider it an honor and a privilege to care for our patients.



Bruce E. Ellerin, JD, PhD, MD
Board-Certified Radiation Oncologist



Oncology Nursing

Our medical oncology unit is composed of knowledgeable, highly skilled registered nurses. We have an outstanding radiation oncology department that provides quality care to our patients. UT Health East Texas strives to provide the best quality care to our patients, increase nurse's knowledge, keeping safety a priority, involving appropriate disciplines, and bringing compassionate care to our patients is in the forefront of our care.

Our goal is to achieve an oncology certification for 100% of our qualified registered nursing, which attests to a nurse's level of knowledge and ability to care for the patient diagnosed with cancer. Registered nurses who provide chemotherapy are certified by the Oncology Nursing Society to administer chemotherapy to our patients. Our hospital is a member of the Commission on Cancer, a program of the American College of Surgeons, which recognizes cancer care programs for their commitment to providing comprehensive, high-quality and multidisciplinary, patient-centered care. This commission sets patient care standards that we meet in order to be associated with this regulatory commission. Nursing has received recognition and commendations from the Commission on Cancer in previous surveys.

We focus on safety at UT Health. We monitor infections, medication administration, surgery, etc., and have made changes that has enhanced patient care and prevented complications.

Our nurses apply evidence-based practice recognized by the Oncology Nursing Society to achieve the best outcome for our patients. Multiple specialties work together as a team involving nursing, physical therapy, nutrition, pharmacy and case management to ensure the patient and their family are thoroughly prepared for discharge. We initiate hospice and/or palliative care with physician's order as a patient's condition warrants. The nursing team is vital in the care of our patients, and we take our role seriously.

Radiation Oncology nurses provide survivorship care plans to patients who complete radiation therapy with the diagnoses of breast, lung, prostate and rectal cancer from stages 0 to III. As they participate in process improvement projects to improve patient education for pain management, they also navigate patients who need assistance with smoking cessation to available programs in the East Texas area. Additionally, the nursing staff collaborates with a multidisciplinary team, which includes other specialties to guide our patients through their cancer treatment journey, as they make sure the patient's needs are met efficiently.

UT Health Tyler, UT Health Athens, UT Health North Campus Tyler and HOPE Cancer Center are integrated to provide the best quality care. Integration committees have been developed to focus on providing transitional quality care from the physician's office and outlying hospitals to our in-patient oncology unit. We are committed to improving the patients overall experience, ensuring that our patients and their families feel that all of their concerns have been addressed.

Our nursing staff also brings the tender side of medicine to our patients through compassion, empathy and love. We bond with our patients and their families to provide comfort during their stay at the hospital. We work closely with our physicians, informing them of any problems, concerns or needs. The patient is not alone in dealing with this traumatic diagnosis, as comforting the patient and their loved ones are what we do.

*“Until today, I wasn’t sure
of just how much I could endure.
But now I’ve found, with thanks to you,
I’m stronger than I ever knew.”*

Tawana Burgess, RN, OCN

Inpatient Oncology

Our comprehensive cancer program:



Community Outreach

Each year, the UT Health East Texas Cancer Institute offers a number of cancer outreach programs designed to enhance community access to cancer prevention, early detection and treatment. Lung, breast, colon, prostate and bladder ranked as the most frequently diagnosed cancers in the UT Health East Texas Cancer Registry in 2019.

HPV Vaccine

The community outreach subcommittee members include representatives from the UT Health Tyler and UT Health Athens Cancer Institute locations, UT Health Tyler and UT Health Athens hospitals, Hope Cancer Center, Northeast Texas Health Department and Hospice of East Texas. Prevention activities focused on identifying receipt of the HPV vaccination per recommended schedule and after data review begin to develop action plans. Collaboration occurred between the health system, community pediatric practices, the American Cancer Society and NET Health.

Data review of the receipt of HPV vaccinations within UT Health East Texas Physicians practice indicated 95% compliance 18 years +; however, less than 18 years, compliance decreased to 40%. Action plans developed: identify physician champions among community pediatric providers; develop plans for education with schools—parent-teacher organizations, school nurses, etc; seek funding opportunities for HPV community-based education.

Cancer Screenings

The community needs assessment indicated that community residents were not aware of cancer screening guidelines. The 2019 screening program focus was on early detection of colon cancer. The target population of adults 50 plus were informed regarding receipt of colonoscopy and the screening guidelines. Two hospital-based events, one in Tyler and a second in Athens, were conducted to inform UT Health East Texas employees and community residents about screening guidelines and to identify participants that met the guidelines for colon screening. Each participant completed a screening criteria form. Participants that met criteria were referred an onsite gastrointestinal (GI) nurse. The GI nurse reviewed the results and assisted the participants with scheduling an appointment. The National Comprehensive Cancer Network (NCCN) colon screening guideline was used as eligibility criteria for screening. Each participant that met criteria for colon screening received a written form with the follow-up recommendations. Participants also received a letter from the cancer institute reiterating the results and recommending discussion with their primary care provider regarding scheduling a colon screening.

Events

- **Pink Ribbon Getaway** - A one-day retreat for breast cancer survivors, celebrated its 12th anniversary in 2019. Since its inception, based on feedback from the community regarding the need for breast cancer survivors to come together to share their story, to become informed regarding new developments in cancer and to have some fun, the Pink Ribbon Getaway has grown in size and content. With over 75 attendees, the 2019 Pink Ribbon Getaway focused on life with breast cancer beyond five years.
- **Breast Health Summit** - A half-day health summit for women in the community to become aware of screening guidelines, the importance of knowing family history and survivorship.
- **Susan G. Komen Race for the Cure®** - UT Health participated in this annual event in an effort to support and raise community awareness of breast cancer.
- **American Cancer Society Cattle Barons' Gala** - UT Health was a sponsor in this community event.
- **Marketing Campaign** - UT Health keeps our cancer services in the spotlight with marketing ads about cancer topics and the importance of prevention and screening.
- **Media** - UT Health highlighted several of our cancer success stories in Tyler Today magazine, as well as commented on other cancer topics through media stories and interviews.

East Texas Pin-a-Sister™

This program reaches out to minority communities, hosting educational programs and 'pinning ceremonies' that are designed to encourage women to receive screening mammograms.

UT Health East Texas Breast Care Center provides clinical oversight and mammography screenings in Cedar Creek Lake. Our mobile mammography unit, equipped with 3D tomosynthesis, serves businesses, school districts and communities in surrounding areas. Michael Klouda, MD, and Brandon Ashton, MD, along with their team of medical professionals, work to ensure women identified in these communities with breast-related conditions are moved quickly through the diagnostic process. These cases receive the benefit of case discussion by a team of physicians at our weekly cancer conferences, ensuring they receive real-time case review and planning of nationally recognized standards and treatment options.

Clinical Trials

At UT Health East Texas HOPE Cancer Center, our caring and highly experienced oncologists are committed to the fight against cancer by not only providing compassionate care to current cancer patients, but also helping find the treatments of tomorrow. One important way we are helping advance the fight is by participating in the investigation of next-generation, anti-cancer medicines through clinical trials.

Clinical trials (also called clinical research or clinical protocols) are the key to making progress against cancer, and today's cancer patients are living longer lives due to now standard cancer treatments that are the result of past clinical trials. Clinical trials are carefully designed and reviewed scientific research studies that involve people who voluntarily consent to participate. Through clinical trials, researchers determine whether new treatments are safe and effective and are an improvement over currently approved treatments. Clinical trials also help us find new ways to prevent and detect cancer and improve the quality of life for people during and after treatment by investigating ways to minimize side effects. When someone decides to take part in a clinical trial, they add to our knowledge about cancer and help improve cancer care for future patients. Any time you or a loved one needs treatment for cancer, clinical trials are a valuable option to consider, and despite a myth that they are only for people who have advanced cancer that is not responding to treatment, clinical trials are available for all stages of cancer.

UT Health East Texas HOPE Cancer Center offers a variety of clinical trials to give you or your loved one local access to these additional treatment options, including those found at major cancer treatment centers. For many patients, enrolling in a clinical trial allows them to be among the first people helped by the treatments of tomorrow. However, clinical trials are not appropriate for every cancer patient, the decision whether or not to participate in a cancer trial is very important and only the patient can make that choice after careful consideration of the pros and cons of participation. If you or a loved one is considering participating in a clinical study, consult with a HOPE Cancer Center oncologist who can recommend trials that may be appropriate, discuss the benefits and risks of participation and answer any additional questions.

For more information about clinical trials at UT Health East Texas HOPE Cancer Center or to schedule an appointment, call 903-592-6152.



Breast Care Center

The UT Health East Texas Breast Care Center continues its mission of early breast cancer detection through a dedicated, compassionate, personalized and comprehensive breast care program. We offer a full range of services for screening and early detection of breast cancer, including diagnostic and screening mammograms, diagnostic and screening breast ultrasounds, stereotactic biopsies, ultrasound-guided biopsies, breast MRI, cyst aspirations, hookwire placements, sentinel lymph node injections and galactograms. Bone density testing also is available at the center.

Two of the breast care center's greatest assets are its radiologists, Michael J. Klouda, MD, and Brandon Ashton, MD. Dr. Klouda is board-certified in diagnostic radiology. He earned his doctor of medicine from Rush Medical College in Chicago and completed a fellowship in breast imaging at The University of Chicago.

Dr. Ashton earned his doctor of medicine from The University of Texas Medical Branch at Galveston and completed a fellowship in breast imaging at Vanderbilt Medical Center in Nashville.



Michael J. Klouda, MD

Medical Director, UT Health East Texas
Breast Care Center



Brandon Ashton, MD

Radiologist, UT Health East Texas
Breast Care Center

The certified mammography technologists that staff our breast care center and mobile mammography unit boast more than 110 years combined of breast imaging experience. All patients receive personalized, one-on-one interaction with a technologist who understands their apprehension regarding this necessary screening exam.

Screening ultrasounds are offered as a supplemental test in conjunction with screening mammograms for women with dense breasts. Dense breasts have more fibrous and glandular tissue than fatty tissue, which can make it difficult for a radiologist to spot cancer on a mammogram. Studies have shown that ultrasound and MRI can help find breast cancers that can't be seen on a mammogram.

The mobile mammography unit continues to make screening mammograms available throughout the region. Digital breast tomosynthesis, also known as 3-D mammography, is available on the mobile mammography unit. Fifteen to 20% of breast cancers detected at the breast care center received screening mammograms via the mobile service.

Of all the breast cancer diagnosed at UT Health East Texas Breast Care Center, 53% were stage 0 (DCIS) and stage one. This small tumor size at diagnosis affords many women the option of choosing among various therapies to treat their cancer, as well as providing the obvious survival benefit that early detection.

Genetic Testing

Knowing your cancer risk may help you and your doctor make better informed decisions about increased surveillance, early detection and treatment of certain cancers. Along with obtaining mammographic images, breast care center staff collect information from each patient regarding their family's cancer history. Genetic testing is offered to patients who meet certain criteria. If a woman is found to fall in the 'high-risk' category (lifetime risk to develop breast cancer > 20%), then screening contrast-enhanced magnetic resonance mammography is also available. The UT Health East Texas Breast Care Center genetic educator accepts referral from primary care providers and evaluates each woman referred based on family history to determine if they meet criteria for genetic testing and/or high-risk management.

Michael J. Klouda, MD

Medical Director, UT Health East Texas Breast Care Center

Brandon Ashton, MD

Radiologist, UT Health East Texas Breast Care Center

Regina Davis, MHA

Director, UT Health East Texas Breast Care Center



Cancer Data Services

The cancer data services department (cancer registry) of the UT Health East Texas Cancer Institute is a case-specific database with detailed information about each patient's type of cancer.

The registry is a central component of the UT Health East Texas health system and it plays a large role in improving quality through retrospectively analyzing patterns and trends in the diagnosis and treatment of cancer. The registry identifies cancer patients seen at UT Health East Texas by utilizing a computer software program (IMPAC Medical Systems-METRIQ) designed especially for cancer data collection. We collect extensive data on each patient, including demographic data, diagnostic findings, primary site of malignancy, histology, stage of disease, treatment and survival data.

In the year 2018, a total of 1,424 new cancer cases were accessioned into the UT Health East Texas Tyler and Athens registry database. Since our reference date of January 1996, a total of 24,148 cases have been accessioned into the registry. We follow 14,289 patients for a lifetime. Our successful follow-up rate since registry date is 88.99% and the past five years of analytic cases follow-up rate is 90.92%. We report statistical information to the Texas Department of Health-Cancer Registry Division and to the National Cancer Database (NCDB). We also post our annual stats to the American Cancer Society's website for public viewing. The statistical information reported to the state registry and NCDB is used for research purposes to gain insight into cancer incidence and to assess effective treatment modalities for cancer.

The cancer data services personnel are active members in the National Cancer Registrar Association (NCRA) and the Texas Tumor Registrars Association (TX-TRA). We also participate in the educational monthly the North American Association of Central Cancer Registries (NAACCR) webinars and the annual East Texas regional workshop for registrars. The cancer data services staff actively participates in the quarterly cancer committee meetings and weekly prospective treatment planning conferences. We participate in the American College of Surgeons' (CP3R) Cancer Program Practice Profile; (RQRS) Rapid Quality Reporting System and National Cancer Database Comparison Benchmark, as well as in-house audits, which monitor quality of patient care.

The approved cancer program benefits patients, the professional staff members, the hospital and the community through:

- Institutional commitment to the provision of high-quality cancer care
- Access to multidisciplinary consultation
- Annual follow-up
- Availability of registry data
- Educational programs
- Comparison of regional clinical experiences with national data
- Research protocols
- Cancer resources/patient counseling
- Ongoing cancer screening program.
- High-quality multidisciplinary care available close to home

The cancer data services department is a service designed to promote the continuity of quality care for the cancer patient. Great emphasis is placed on high-quality cancer registry data and a foundation for future analyses here at the UT Health East Texas Cancer Institute.

Cancer Data Services Personnel

Almarie Moore, CTR,

Cancer Data Service Manager

Sandy Spurbeck,

Cancer Data Service Abstractor

Dana Stegall,

Cancer Data Service Abstractor

Kristen Steinbrecher, COTA, BSHP, CHIT,

Cancer Data Service Abstractor

JoAnn Hampton, CCRA,

Cancer Data Service Abstractor

Dena Wright,

Cancer Data Service Assistance

Quence Miller,

Cancer Data Service Follow-up Clerk

2018 Summary of Program Components

1,424 New Cancer Cases Accessioned

502 Total Licensed Beds

36 Oncology Beds

33 Full-time Oncology Nurses

Eight OCN (Oncology Certified Nurses)

Medical Oncology/Hematology

Radiation Oncology

Pathology

Diagnostic Radiology

General Surgery

Specialized Surgery

Community Hospital Comprehensive Oncology Program

Components of UT Health East Texas Cancer Institute's ACoS Approved Cancer Program

Multidisciplinary Cancer Committee

General Weekly Prospective Treatment Planning Conferences

Site-Specific Weekly Prospective Breast Cancer Treatment Planning Conference

Site-Specific Weekly Prospective Lung Cancer Treatment Planning Conference

Clinical Trials

Continuing Medical Education (CME)

Cancer Resource/Patient Counseling

Breast Care Center with Mobile Mammography Unit

Quality Studies (CoC/In-house Audits)

Fully Computerized Cancer Registry

2018 Prospective Treatment Planning Conferences Primary Cancers Presented

Sites Discussed

Appendix	2
Bile Duct	1
Bladder/Renal Pelvis/Ureter	1
Bone Marrow	1
Brain	25
Breast	360
Colorectal	22
Esophagus	5
Gallbladder	2
Gastric/Stomach	1
Gynecologic	3
Head & Neck, NOS	3
Hodgkin's/Non-Hodgkin's	15
Kidney	3
Liver	12
Lung	241
Myeloma	2
Nasopharynx	1
Pancreas	3
Parotid Gland	3
Penis	1
Pituitary	2
Prostate	1
Skin	11
Small Intestine	1
Soft Tissues	1
Spinal Canal	1
Stomach	2
Thyroid	3
Unknown Primary	7
Total	736



Primary Site 2018	Analytic Cases	Non-Analytic Cases	Total Cases
Oral Cavity/Pharynx	34	22	56
Tongue	14	7	21
Salivary Gland	4	3	7
Mouth	1	Ø	1
Tonsil	2	3	5
Nasopharynx	8	6	14
Oropharynx	3	Ø	3
Hypopharynx	2	1	3
Other Oral Cavity & Pharynx		2	2
Digestive System	310	95	405
Esophagus	20	4	24
Stomach	17	8	25
Small Intestine	7	5	12
Anus, Anal Canal & Anorectum	11	5	16
Liver & Intrahepatic Bile Duct	33	9	42
Gallbladder	4	3	7
Other Biliary	3	2	5
Pancreas	32	8	40
Retroperitoneum	2	Ø	2
Peritoneum, Omentum & Mesenteric	1	Ø	1
Other Digestive Organs	3	1	4
Cecum	25	6	31
Appendix	5	Ø	5
Ascending Colon	18	3	21
Hepatic Flexure	5	1	6
Transverse Colon	13	3	16
Descending Colon	6	Ø	6
Sigmoid Colon	5	2	7
Large Intestine, NOS	36	10	46
Rectum & Rectosigmoid	4	Ø	4
Rectosigmoid Junction	16	9	25
Rectum	44	16	60
Respiratory System	305	111	416
Larynx	10	5	15
Lung & Bronchus	295	106	401

Primary Site 2018	Analytic Cases	Non-Analytic Cases	Total Cases
Bone and Joint	1	1	2
Soft Tissue	5	3	8
Skin (excluding Basal & Squamous)	17	20	37
Melanoma — Skin	14	18	32
Other Non-Epithelial Skin	3	2	5
Breast	226	76	302
Female Genital Organs	26	29	55
Cervix Uteri	4	6	10
Corpus Uteri/Uterus/Vulva	11	12	23
Ovary	11	11	22
Male Genital Organs	102	56	158
Prostate	97	56	153
Testis	4	Ø	4
Penis	1	Ø	1
Urinary System	156	37	193
Bladder	82	21	103
Kidney/Renal Pelvis	63	16	79
Ureter	11	Ø	11
Eye & Orbit	1	2	3
Central Nervous System (CNS)	54	13	67
Brain	20	6	26
Meninges/Other CNS	34	7	41
Endocrine System	32	4	36
Thyroid	13	2	15
Other Endocrine Glands including Thymus	19	2	21
Lymphoma	55	52	107
Hodgkin's	4	2	6
Non-Hodgkin's Lymphoma	51	50	101
Lymphatic/Hematopoietic	44	52	96
Leukemia	29	39	68
Myeloma	15	13	28
Mesothelioma	1	Ø	1
Miscellaneous Sites	55	40	95
Total Number of New Cases for 2018	1,424	613	2,037

2019 Five Major Sites

Total Analytic Cases: 1,424

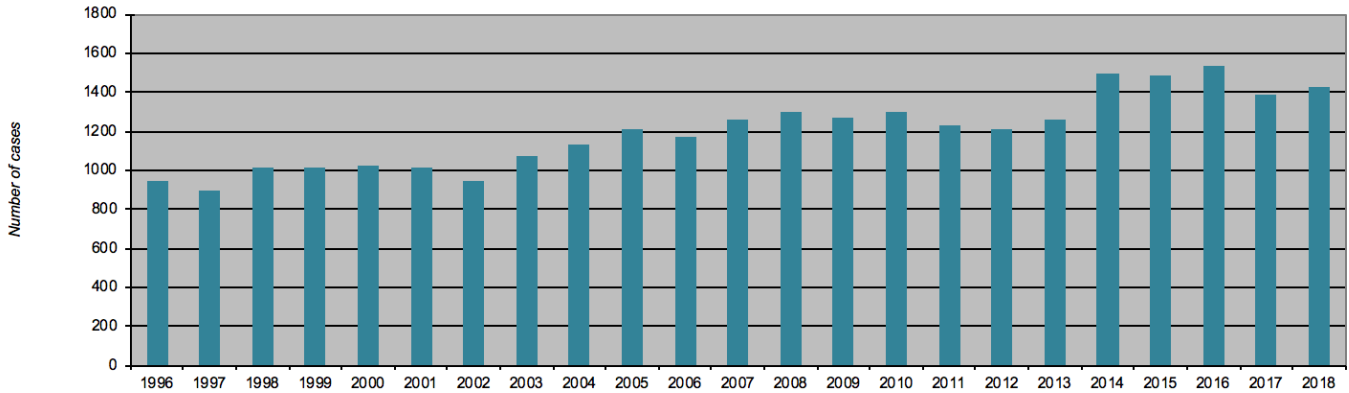
SITE	UT HEALTH EAST TEXAS	TEXAS	NATIONAL
Lung	295 (21%)	14,750 (12%)	228,150 (13%)
Breast	226 (16%)	18,750 (15%)	268,600 (15%)
Colorectal	177 (12%)	10,950 (9%)	145,600 (8%)
Prostate	97 (7%)	10,660 (8%)	174,650 (10%)
Bladder	82 (6%)	4,470 (4%)	80,470 (5%)

Source: Texas & United States - American Cancer Society

2019 Cancer Facts and Figures by State (Total New Cases 124,890)

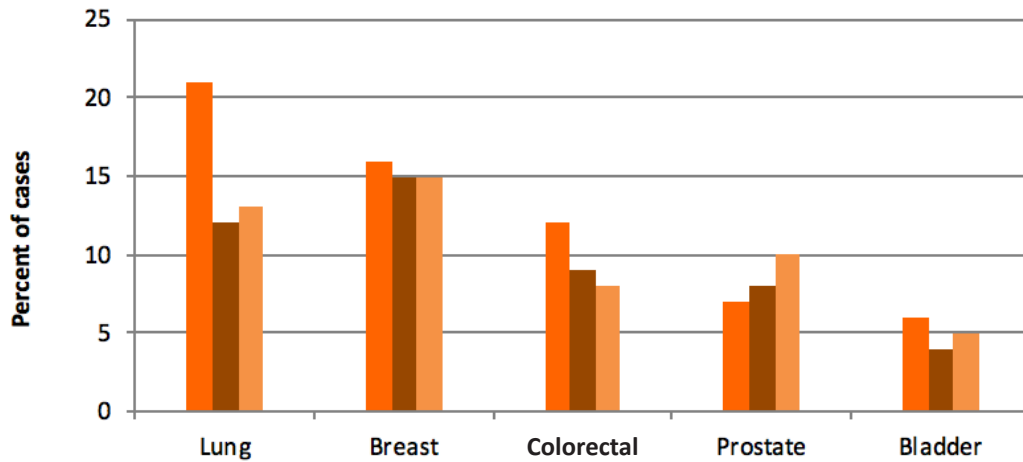
2019 Cancer Facts and Figures by United States (Total New Cases 1,762,450)

1996-2018 Total Registry Cancer Cases



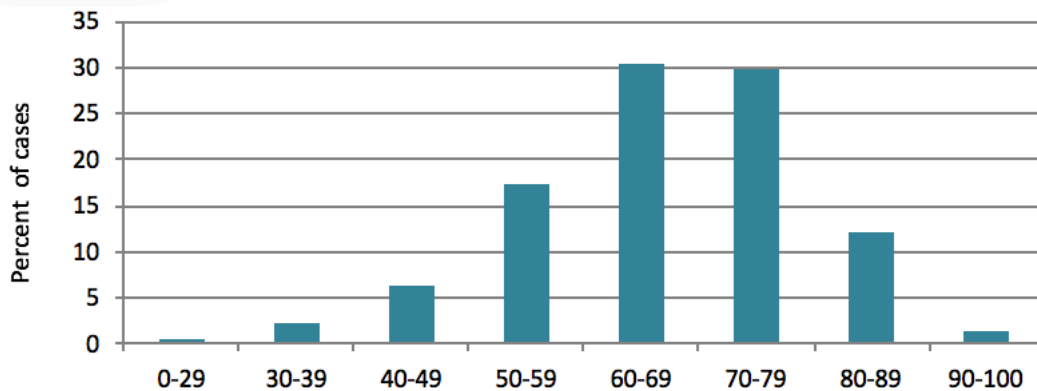
UT Health East Texas Cancer Institute Five Major Sites

2018 Total Analytic Cases (1,424)



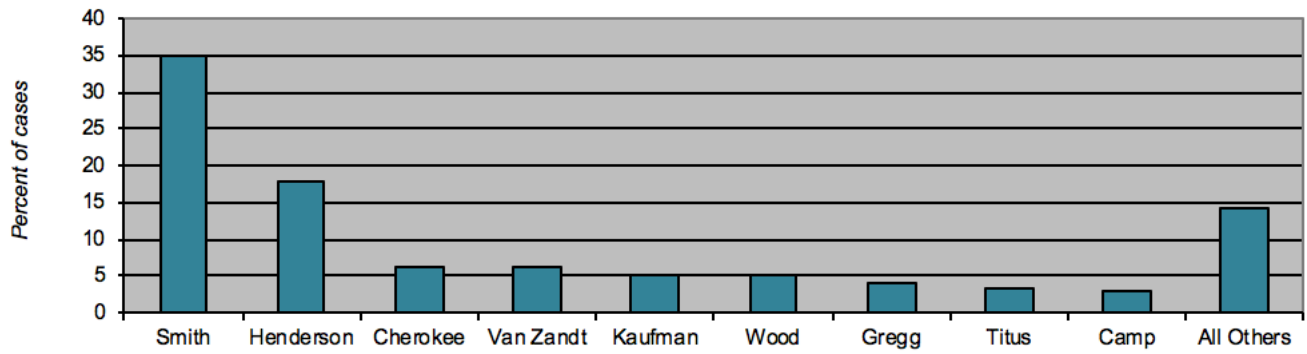
Distribution by Age at Diagnosis

2018 Total Analytic Cancer Cases



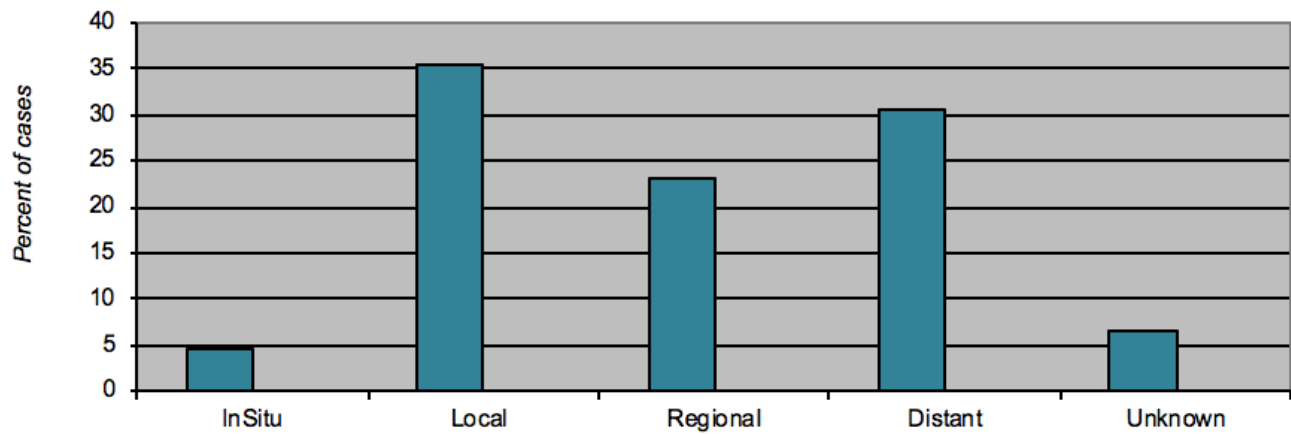
Distribution by State/County

2018 Colorectal (177 Total Analytic Cases)



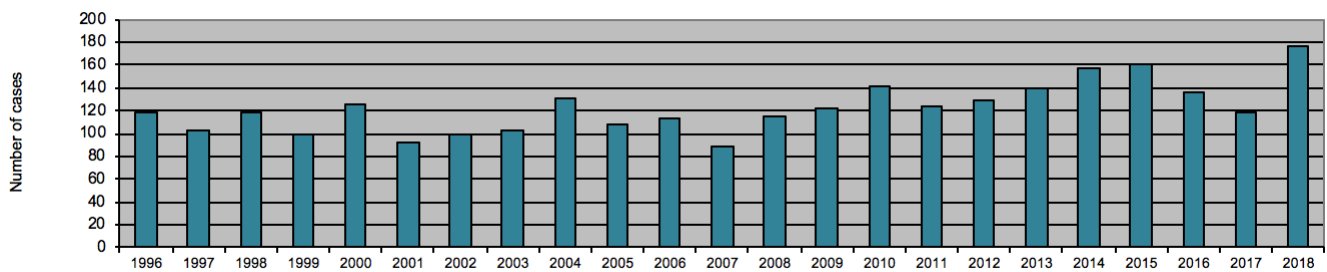
Distribution by General Summary Stage

2018 Total Analytic Cases



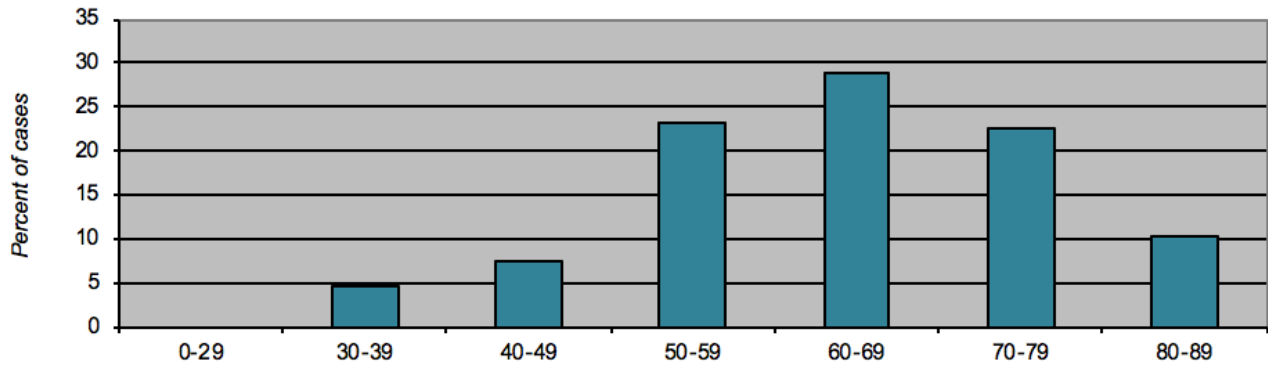
Number of New Colorectal Cases

Annually Diagnosed



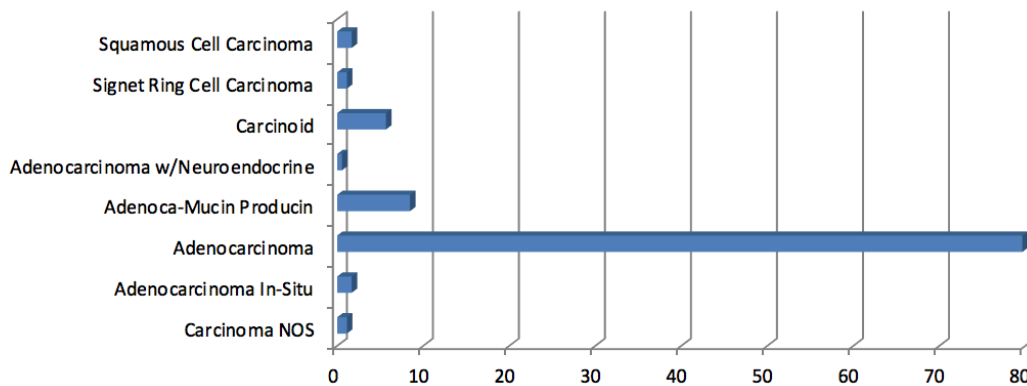
Distribution by Age at Diagnosis

2018 Colorectal (177 Total Analytic Cases)



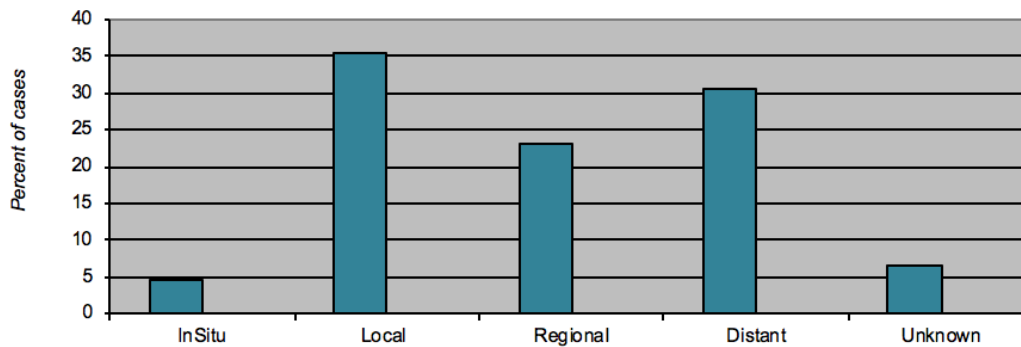
Distribution by Histology

2018 Analytic Colorectal



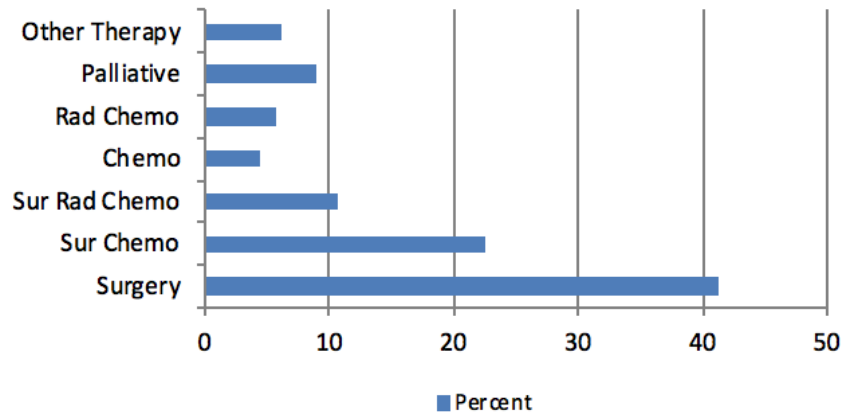
Distribution by General Summary Stage

2018 Total Analytic Cancer Cases

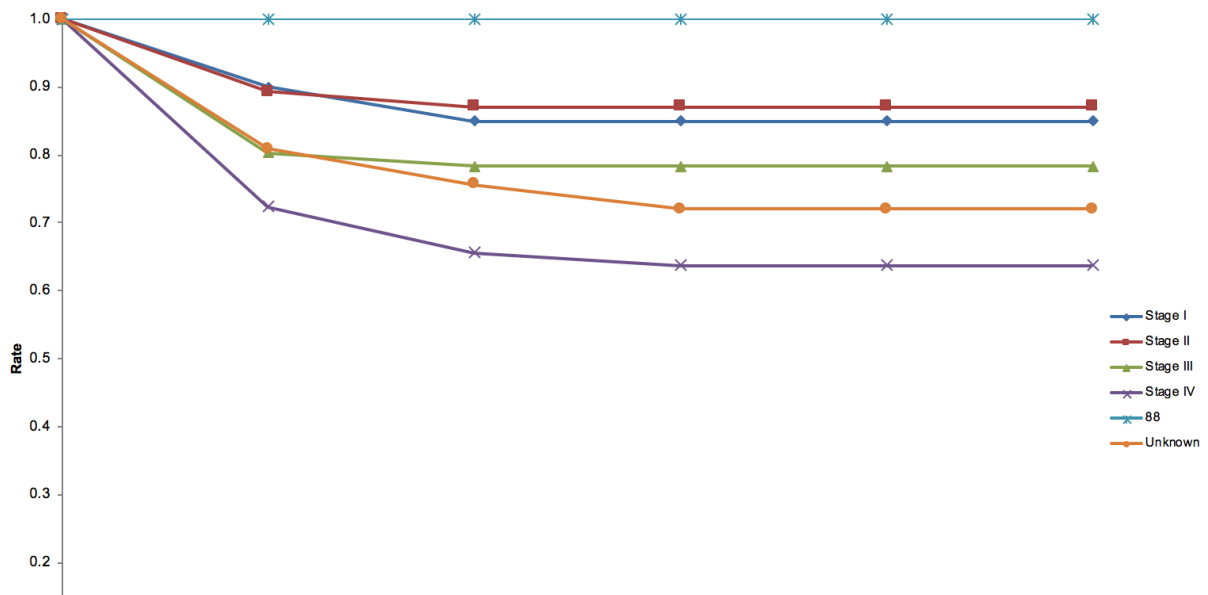


Distribution by Initial Therapy

2018 Total Analytic Colorectal



Relative Survival by Best American Joint Committee on Cancer (AJCC)





UTHealth

East Texas

HOPE Cancer Center

A department of UT Health North Campus Tyler

UT Health East Texas HOPE Cancer Center

Few things will have as dramatic of an effect on your life as learning that you have cancer.

Having helped East Texans fight cancer for more than 30 years, we understand how cancer diagnosis and treatment can impact your life.

As a regional authority on cancer care and treatment, UT Health East Texas HOPE Cancer Center provides today's most advanced treatments, clinical trials and the highest standard of care.

Our doctors are the reason behind our reputation for excellence. Our oncologists are double-and triple-board-certified specialists who trained at some of the most prestigious cancer treatment institutions in the country. With diverse skill sets and vast experience in treating cancer, our physicians are recognized as leaders in cancer care in East Texas.

We are governed by and make decisions based on our commitment to excellent medicine and unsurpassed patient care. It also means our oncologists collaborate with one another and coordinate the patient's care with other physicians and caregivers. Our track record for success is driven by independence and leading with our hearts.

Our physicians are on the attending staff of UT Health Tyler and UT Health North Campus Tyler. We also are on the consulting staff of UT Health hospitals in Athens, Henderson and Jacksonville, as well as UT Health East Texas Long-Term Acute Care and the UT Health East Texas Rehabilitation Hospital.

Michael Y. Ashigbi, MD

Board-Certified: Internal Medicine, Hematology, Medical Oncology

Myrtha E. Basile, MD

Board-Certified: Hematology, Medical Oncology

Robert M. Droder, MD

Board-Certified: Internal Medicine, Hematology, Medical Oncology

Katrina Y. Glover, MD

Board-Certified: Internal Medicine, Medical Oncology

Arielle S. Lee, MD

Board-Certified: Internal Medicine, Hematology, Hospice and Palliative Medicine, Medical Oncology

Joseph T. Martins, MD

Board-Certified: Internal Medicine, Hematology, Medical Oncology

Shawn V. Tai, MD

Board-Certified: Internal Medicine, Medical Oncology

Marc E. Usrey, MD

Board-Certified: Internal Medicine, Hematology, Medical Oncology

J. Brice King, FNP-C

Master of Science in Nursing, Family Nurse Practitioner
Master of Science in Biomedical Science

Annala J. Shirley, AGNP-C

Post-Master's Certificate, Primary Care Nurse Practitioner
Master of Business Administration
Master of Nursing

Locations:

UT Health East Texas Cancer Institute

721 Clinic Dr.
Tyler, TX 75701
903-535-6301

UT Health East Texas Breast Care Center

700 Olympic Plaza, Ste. 100
Tyler, TX 75701
903-596-3164

UT Health North Campus Tyler MD Anderson Cancer Center

11937 U.S. Hwy. 271, Building G
Tyler, TX 75708

UT Health North Campus Tyler Breast Care Center

11937 U.S. Hwy. 271, 2nd Floor
Tyler, TX 75708
903-877-8793

UT Health East Texas HOPE Cancer Center

A department of UT Health North Campus Tyler

721-A Clinic Dr.
Tyler, TX 75701
903-592-6152

UT Health East Texas HOPE Cancer Center - Jacksonville

A department of UT Health North Campus Tyler

203 Nacogdoches St., Ste. 230
Jacksonville, TX 75766
903-589-1327

UT Health East Texas HOPE Cancer Center - Henderson

A department of UT Health North Campus Tyler

317 Wilson St.
Henderson, TX 75652
903-392-8150

UT Health East Texas HOPE Cancer Center - Athens

113 Medical Cir., Ste. 106
Athens, TX 75751
903-675-1322

UT Health East Texas HOPE Cancer Center - Cedar Creek Lake

126 W. Main St., Ste. G
Gun Barrel City, TX 75156
903-802-7800



UTHealth
East Texas