



2018 Annual Cancer Report



UTHealth
East Texas

One Woman + One Gift = A Lasting Legacy

The mobile mammography program and the people it serves benefit from an endowment established by Ann White of Tyler at the time of her death in 1997. Mrs. White had previously toured the Cancer Institute and was especially moved by its breast cancer outreach to rural women. Today, the expansive mobile mammography unit with 3-D technology is a visual reminder of the \$1.5 million endowment she established to help maintain this vital resource for our community.



Mission Statement	4
Chairmen and Physician Liaisons	5
2017-18 Cancer Committee	6
Chairman's Report	7-8
Radiation Oncology.....	9
Oncology Nursing.....	10
Nursing Education/Competency	11
Community Outreach	12-13
Clinical Trials	14
Psychosocial Distress Screening	15
Breast Care Center.....	16-17
Cancer Data Services	18
2017 Summary of Program Components	19
2017 Prospective Treatment Planning	20-22
2017 Five Major Sites	23
Graphic Presentation of Lymphoma	24-27
Letter of Thanks.....	27
HOPE Cancer Center	28-29
Mobile Mammography Program.....	30-31



UT Health East Texas Cancer Institute Mission Statement

We treat cancer. We care for people.

The mission of the UT Health East Texas Cancer Institute is to prevent, detect and treat cancer with dedication to the health of the people of East Texas. To accomplish this mission, we are committed to the following standards:

The UT Health East Texas Cancer Institute will...

Provide for the physical, emotional and spiritual needs of the patient in order to promote quality of life in a compassionate manner.

Create superior multidisciplinary programs in order to provide the most appropriate cancer care.

Assure a highly trained professional staff, and provide them with the best available resources and technology in order to render the most advanced patient care.

Continually improve the quality of patient care by assessing and improving those managerial, clinical and support processes that most affect patient outcomes.

Manage its financial and human resources in an effective manner that contributes to the fulfillment of its mission.



UT Health East Texas Cancer Program Chairmen

Beginning in 2009, cancer program chairman serves a three-year term.

1986 - 1989	Gary Gross, MD, Medical Oncology/Hematology
1990	Dale Lakomy, MD, Radiation Oncology
1991	Gary Gross, MD, Medical Oncology/Hematology
1992	Gary Kimmel, MD, Medical Oncology/Hematology
1993	Arielle Lee, MD, Medical Oncology/Hematology
1994	Gary Gross, MD, Medical Oncology/Hematology
1995	JoAnne Carignan, MD, Medical Oncology/Hematology
1996	Mitchell Anderson, MD, Radiation Oncology
1997	Robert Droder, MD, Medical Oncology/Hematology
1998	Gary Gross, MD, Medical Oncology/Hematology
1999	Leonard DeCarlo, MD, Urology
2000	James Kolker, MD, Radiation Oncology
2001	William Lunn, MD, Pulmonology
2002	JoAnne Carignan, MD, Medical Oncology/Hematology
2003	Heidi McKellar, MD, Radiation Oncology
2004	Myrtha Basile, MD, Medical Oncology/Hematology
2005	Charlie Haas, MD, Medical Oncology
2006	Michael Klouda, MD, Diagnostic Radiology
2007	Joseph Martins, MD, Medical Oncology/Hematology
2008 - 2010	Michael Ashigbi, MD, Medical Oncology/Hematology
2011 - Present	Andrew Kulaga, MD, Pathology

UT Health East Texas Cancer Program Physician Liaisons

1986	Joseph Selman, MD, Radiation Oncology H.R. Fender, MD, Surgery
1987 - 1991	H.R. Fender, MD, Surgery
1991 - 1994	Joseph Selman, MD, Radiation Oncology H.R. Fender, MD, Surgery
1994 - 1997	Joseph Selman, MD, Radiation Oncology
1997 - 2014	H.R. Fender, MD, Surgery
2015 - 2017	Jeffrey Gilroy, MD, Radiation Oncology
2017 - Present	Bruce Ellerin, MD, Radiation Oncology

UT Health East Texas Cancer Institute

2017-2018 Cancer Committee Members

Andrew Kulaga, MD, Chairman.....	Pathology
Michael Ashigbi, MD, Past Chairman	Medical Oncology/Hematology
Bruce Ellerin, MD.....	Liaison
Carlos Demandante, MD.....	Radiation Oncology
Jeffrey Gilroy, MD	Radiation Oncology
Arielle Lee, MD, Conference Coordinator	Medical Oncology/Hematology
Joseph Martins, MD, Lung Conference Moderator.....	Medical Oncology/Hematology
Charles Haas, MD, Quality Control of Registry.....	Medical Oncology/Hematology
Michael Klouda, MD, Genetics Professional	Diagnostic Radiology/Breast Center
Thomas Graham, MD.....	Neurosurgery
Alfred Llave, MD	Diagnostic Radiology
Thomas McGovern, MD.....	Surgery

Ancillary Members

Cody Boyd.....	CEO, UT Health North Campus Tyler/Division Administrator of Cancer Services, Tyler
Dianne Adelfio, Quality Improvement	CNO, UT Health Tyler
Felipe Barrera, RT	Radiation Therapy Tech/Q.I. Director
Ashlyn McKinney	Marketing Strategist, Oncology
Pat Branham, RN, OCN, BSN.....	Oncology Nursing (HOPE Cancer Center)
Tawana Burgess, RN, OCN.....	Oncology Nurse
Blas Caroprese, PhD, DABR.....	Physics
Regina Davis.....	Cancer Institute/Breast Care Service Director
Daisy Drinkard.....	American Cancer Society
Perry Edwards.....	Chaplain
Jack Endres.....	CEO, UT Health Athens
Amy Everett, RN.....	Hospice of East Texas
Cathy Hanks, RN, OCN	Case Manager
Linda Harden.....	Rehabilitation
Courtney Hicks.....	American Cancer Society
Stephen Hubbard, PC.....	Attorney/Member of Community
Kevin Jablonski, RN	CNO, UT Health Athens
Almarie Moore, CTR.....	Cancer Data Service Manager
Perla Lopez, RN, BSN.....	Clinical Research
Jeanetta Patterson, RN, OCN.....	Clinical Trials Manager
Suzie Roden.....	Dietary/Nutrition
Briana Schamber, RN.....	Clinical Research
Laura Scritchfield, RN.....	Oncology Nurse Director/6 South
Carla Stuart, RN, OCN.....	Nurse Manager
Janice Terry, LCSW.....	Behavioral Health Therapist
Misty Weathers, RN.....	CyberKnife Coordinator
David Williams, RN.....	Quality Improvement Coordinator
Cynthia Willis, PharmD	Pharmacy

Chairman's Report

The UT Health East Texas Cancer Institute has been a leader in the provision and coordination of a comprehensive cancer program for years. Our program adds significant value to the communities served by giving our cancer patients the option of pursuing their treatment with local healthcare providers who follow evidence-based standards established by the National Comprehensive Cancer Network, resulting in high-quality care in a pleasant and convenient setting. Our cancer program is devoted to cancer education, early detection and prevention, diagnosis, advanced treatment and follow-up care for the communities of East Texas. Registry data is used to plan and facilitate cancer screening, diagnostic treatment and recovery programs that directly address primary cancers diagnosed in our communities. While the quantitative portion of this report focuses on data obtained in 2017, the program information included provides an overview of the activities and services associated with our program in 2018.

The UT Health Cancer Institute continues to function as an Integrated Network Cancer Program. We continue to foster collaborative relationships throughout the spectrum of care for our cancer patients and cancer program. We are proud of our cancer program's accomplishments over this past year, as we continue the journey to achieve full integration of our UT Health Tyler and UT Health Athens cancer program services and outreach into the surrounding communities. We celebrate the caring nature of our physicians and staff that make up our integrated cancer program.

We continually strive to improve the care provided to our patients who reside in rural areas of East Texas. Our medical oncologists treat patients in outreach locations including Athens, Henderson, Jacksonville, Gun Barrel City and Pittsburg. Many of our other specialists in pulmonology, gastroenterology and cardiology also provide consultative services to the regional communities, bringing the highest level of medical care to areas that are traditionally underserved.

In addition to our dedicated staff of medical professionals, the UT Health Cancer Institute provides access to some of the most advanced cancer treatment technologies in East Texas. We are the only facility in the region with a CyberKnife® Stereotactic Radiosurgery System, a revolutionary treatment for tumors that may have otherwise been considered untreatable. The UT Health Cancer Institute's radiation oncology treatment facility also provides treatment options with the Varian TrueBeam™ system. This technology integrates respiratory gating, real-time tracking, imaging and treatment delivery to provide stereotactic radiosurgery and precise radiotherapy for lesions, tumors and conditions anywhere in the body where radiation therapy is indicated. Additional linear accelerators include an Elekta Infinity at UT Health Athens and an Elekta Versa HD at UT Health Tyler.

Through our highly qualified oncologists, other physician specialists and state-of-the-art cancer treatment technologies, we strive to fulfill our mission to prevent, detect and treat cancer with dedication to the health of East Texans.

Our comprehensive cancer program includes:

- Radiation oncology.
- Mammography, including a mobile mammography unit with 3-D tomosynthesis.
- Medical oncology.
- Screening and prevention programs.
- Surgical oncology.
- Cancer conferences.
- Stereotactic radiosurgery.
- Cancer data registry.
- Specialized inpatient care.
- Breast care center.
- Cancer support services.

The East Texas Pin-a-Sister™ program reaches out to minority communities, hosting educational programs and ‘pinning ceremonies’ that are designed to encourage women to receive screening mammograms. The UT Health East Texas Breast Care Center provides clinical oversight and mammography screenings in Cedar Creek Lake. Our mobile mammography unit, equipped with 3-D tomosynthesis, serves businesses, school districts and communities in surrounding areas. Michael Klouda, MD, and Brandon Ashton, MD, along with their team of healthcare professionals, work to ensure women identified in these communities with breast-related conditions are moved quickly through the diagnostic process. These cases receive the benefit of case discussion by a team of physicians at our weekly cancer conferences, ensuring they receive real-time case review and planning of nationally recognized standards and treatment options.

Community education, support, involvement and prevention programs continue to be an important part of our comprehensive cancer program. Early detection is vital to the successful treatment of cancer. UT Health participated in the following events and programs in 2018, with the goal of raising awareness of cancers that most often impact the communities we serve.

- **Breast Health Summit** - A half-day health summit for women in the community to become aware of screening guidelines, the importance of knowing family history and survivorship.
- **Pink Ribbon Getaway** - 2018 marked the 12th year we have held this retreat for breast cancer survivors. Our keynote speaker, Bora Lim, MD, assistant professor with the breast medical oncology department at The University of Texas MD Anderson Cancer Center in Houston, discussed triple negative and inflammatory breast cancer.
- **Susan G. Komen Race for the Cure®** - UT Health participated in this annual event in an effort to support and raise community awareness of breast cancer.
- **American Cancer Society Cattle Barons’ Gala** - UT Health was a sponsor of this community event for the American Cancer Society.
- **Marketing campaign** - UT Health keeps our cancer services in the spotlight with marketing ads about cancer topics and the importance of prevention and screening.
- **Media** - UT Health highlighted several of our cancer success stories in *Tyler Today* magazine, as well as commented on other cancer topics in other media throughout the year.

This report illustrates the various methods and personnel we have enlisted to battle cancer in East Texas. We look forward to continuing to serve the patients and families in our community.

Cody Boyd

CEO, UT Health East Texas Cancer Institute

Andrew Kulaga, MD

Chairman, Pathology





Radiation Oncology

The UT Health East Texas Cancer Institute opened in 1982 to provide radiation therapy services to East Texans. Radiation therapy destroys tumor cells while preserving surrounding normal tissue to the greatest extent possible. Radiation is often combined with surgery and/or systemic therapy, such as chemotherapy, hormone therapy or immunotherapy, to cure or control malignant disease. In certain instances, radiation therapy alone may be the single best method for the treatment and cure of cancer. In other situations, radiation therapy can be used as a supportive measure to reduce bleeding, pain or to prevent adverse effects.

The cancer institute consists of two centers, in Tyler and Athens, which serve the full breadth of East Texas, from the outskirts of Dallas to the Louisiana border. More than 25,000 cancer patients have been treated at the cancer institute by our expert team of health specialists, which includes physicians, physicists, dosimetrists, radiation therapists, nurses and other support personnel. Our team is led by the radiation oncologist, a physician who specializes in the treatment of cancer and other conditions with radiation therapy.

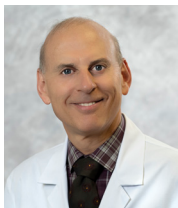
The radiation oncologist determines which radiation therapy plan is best for a particular patient, after careful discussion and review of a patient's case with the surgeon, the medical oncologist, the radiologist and/or other clinical personnel. The radiation oncologist plans the patient's treatment and carefully monitors the patient's progress during and after treatment. Once radiation treatment begins, the radiation oncologist sees the patient at least once a week. The patient also can speak with the nursing staff at any time when a question or problem arises.

The physicist and the dosimetrist assist the radiation oncologist by helping to design the very best radiation treatment plan to ensure therapy is delivered in the safest and most efficient manner. Their goal is to design a treatment plan that will address the tumor or area of concern as the physician intended, while at the same time, sparing normal tissue as much as possible.

Radiation therapists work with the radiation oncologist to set up and deliver daily treatment on one of the high-energy linear accelerators (treatment machines) at the UT Health Cancer Institute treatment centers in Tyler and Athens.

Nurses work closely with the radiation oncologist to monitor the patient's well-being during treatment and to provide information and support to the patient and their family.

Every staff member at the cancer institute has one goal—to treat patients in the most effective and compassionate way. We consider it an honor and a privilege to care for our patients.



Bruce E. Ellerin, JD, PhD, MD
Board-Certified Radiation Oncologist



Oncology Nursing by Tawana Burgess, RN, OCN (Inpatient Oncology)

At UT Health Tyler and UT Health Athens, the nursing staff members in the radiation oncology department are the premier providers of compassionate care for patients and their families. Our medical oncology unit is comprised of knowledgeable, highly skilled registered nurses who bring compassion and excellence in providing care for our patients.

Our goal is to achieve and maintain 25 percent of our registered nurses with oncology certification, which brings a vast amount of knowledge to proficiently care for patients diagnosed with cancer. Registered nurses who provide chemotherapy are certified by the Oncology Nursing Society to administer chemotherapy to our patients. UT Health Tyler and UT Health Athens are members of the Commission on Cancer, a program of the American College of Surgeons, which recognizes cancer care programs for their commitment to providing comprehensive, high-quality and multidisciplinary patient-centered care. This commission sets patient care standards that we meet in order to be associated with this regulatory commission. Nursing has received recognition and commendations when surveyed by the Commission on Cancer.

Our nurses provide survivorship care plans to patients who complete radiation therapy with the diagnoses of breast, lung, prostate and rectal cancer from stages 0 to III. As they participate in process improvement projects to improve patient education for pain management, they also navigate patients who need assistance with smoking cessation to available programs in East Texas. Additionally, the nursing staff collaborates with a multidisciplinary team, which includes other specialties, to guide our patients through their cancer treatment journey as they make sure the patient's needs are met efficiently.

Our nurses apply evidence-based practices recognized by the Oncology Nursing Society to achieve the best outcomes for our patients. Multiple specialties work together as a team involving nursing, physical therapy, nutrition, pharmacy and case management to ensure the patient and their family members are thoroughly prepared for discharge. We initiate hospice and/or palliative care with a physician's order as a patient's condition warrants. The nursing team is vital in the care of our patients, and we take our role seriously.

The nursing staff at UT Health Tyler and UT Health Athens also brings the tender side of medicine to our patients through compassion, empathy and love. We bond with our patients and their families to provide comfort during their stay at the hospital and work closely with our physicians, informing them of any problems, concerns or needs. The patient is not alone in dealing with this traumatic diagnosis, as comforting the patient and their loved ones is what we do.

From a patient's perspective, knowing the oncology nurse standing by your side is trained in the latest cancer treatment regimens, as well as end-of-life care, brings confidence to a patient and his or her family, which can help lighten the burden.

A former patient wrote the following poem regarding the care he received.

*“Until today, I wasn’t sure
of just how much I could endure.
But now I’ve found, with thanks to you,
I’m stronger than I ever knew.”*



Nursing Education/Competency

The Cancer Committee recently presented an updated Standard Practice for Implanted Ports as an integrated measure with UT Health East Texas, fulfilling competency requirements. On Nov. 10, 2018, in Dallas, an Oncology Certified Nurse (OCN) review course was held for which we had the opportunity to send 20 oncology nurses from each cancer institute in Tyler and Athens and UT Health Tyler, fulfilling the integrated educational approach requirements. Additionally, April 11-14, 2019, The Oncology Nursing Society's 44th Annual Congress is to be held in Anaheim, Calif. We are honored to have the opportunity to provide registration, lodging and airfare for six nurses who are pursuing OCN certification or need to acquire continuing education hours for recertification.



Community Outreach

Each year, the UT Health East Texas Cancer Institute offers a number of cancer outreach programs designed to enhance community access to cancer prevention, early detection and treatment. In 2018, the most frequently diagnosed cancers in the UT Health East Texas Cancer Registry were lung and bronchus, breast, prostate, colon and bladder.

In 2018, a community outreach subcommittee was formed, which included representatives from the UT Health Cancer Institutes in Tyler and Athens, UT Health Tyler and UT Health Athens, HOPE Cancer Center, Northeast Texas Public Health District and Hospice of East Texas. Prevention activities focused on decreasing the number of lung cancer diagnoses with events used to target smoking prevention in adolescents. Smith and Henderson County schools were the focus for education. The health system, schools in Smith and Henderson County, the American Cancer Society, NET Health and community education groups such as “Say What” (Students, Adults and Youth Working Hard Against Tobacco) collaborated to create this event.

Three smoking prevention presentations were conducted on March 9, 2018, at Boulter Middle School in Tyler. Students from grades six, seven and eight attended the presentations, about 750 in total. The presentations consisted of a variety of true/false questions, such as:

- People who start using tobacco before the age of 21 are more likely to become lifelong tobacco users.
- Pets who live with a smoker can develop lung cancer.
- Less than 77 people in Texas die every day from a tobacco-related illness.

These questions were used as a pre/post test to evaluate effectiveness of the presentations. The results of the pretest showed that 60 percent of sixth graders, 65 percent of seventh graders and 70 percent of eighth graders answered the questions correctly. The post test results showed that 75 percent of sixth graders, 80 percent of seventh graders and 85 percent of eighth graders answered the questions correctly. The initial goal of correct responses was 85 percent.

The community needs assessment indicated that community residents were not aware of screening guidelines. The 2018 screening program was focused on early detection of lung cancer. The target population—smokers, ages 55-77—were informed regarding participation in the CT lung-screening program. Outreach events were held at Walmart on Highway 31 in Tyler, and the Athens Walmart. Five participants met the criteria for a lung screening. The National Comprehensive Cancer Network guidelines for low-dose CT scans were used as eligibility criteria for screening. Staff from UT Health Tyler and UT Health Athens discussed the importance of scheduling a lung screening with each of the identified participants. Each participant that met the criteria for lung screening received a written form with follow-up recommendations. The five participants also received a letter from cancer institute staff reiterating the results and recommending a discussion with their primary care provider to schedule a lung screening. To date, one participant has scheduled a CT lung screening.

A second outreach event was held to identify community residents that met the criteria for a low-dose CT lung screening and was conducted at UT Health East Texas Physicians on Fifth Street in Tyler. Patients with appointments were given a lung-screening form to complete prior to their appointment. Two hundred participants received forms, and 50 patients met the criteria for a lung screening. Each participant that qualified was given a copy of the recommendations and a follow-up letter recommending a discussion with their physician to order a lung screening. To date, five patients have received lung screenings.

A third outreach event was conducted at the Tyler Bingo Hall. Fifty attendees participated in the CT lung-screening program, and five met the criteria. Each participant that qualified for lung screening received a copy of the recommendations and a follow-up letter recommending a discussion with his or her physician to schedule a CT lung screening. Zero participants have received lung screenings at this time.

The Pink Ribbon Getaway, a retreat for breast cancer survivors, celebrated its 11th anniversary in 2018. Since its inception, based on feedback from the community regarding the need for breast cancer survivors to come together to share their stories, become informed of new developments in cancer and to have some fun, the Pink Ribbon Getaway has grown in size and content. With more than 100 attendees, the 2018 Pink Ribbon Getaway focused on survivorship and advances in cancer research. Bora Lim, MD, assistant professor with the breast medical oncology department at The University of Texas MD Anderson Cancer Center in Houston, discussed triple negative and inflammatory breast cancer.



Clinical Trials

Clinical trials help provide new HOPE against cancer.

A clinical trial is a carefully designed and managed scientific study that tests new medical techniques (medications, devices, etc.) and their effectiveness in the prevention, detection, diagnosis and cure of diseases. Clinical trials are how all medical therapies, devices and techniques are evaluated for human use. Without clinical trials, new drugs and treatments for cancer would not be investigated, be approved or come into use to benefit patients. All anti-cancer treatments in use today were investigated through clinical trials, and the first people to benefit from these treatments were those who participated in the clinical investigations.

HOPE Cancer Center of East Texas offers many different clinical trials, which is how we are able to give patients access to alternative treatment options and new HOPE. For many whose treatment is ineffective, enrolling in a clinical trial allows them to be among the first people helped by the treatments of tomorrow.

The decision to participate in a cancer trial is important and only the patient can make that choice. The patient's views on scientific evidence, their feelings about their disease, in addition to their attitudes about health are all vital to consider. It is important to do adequate research about clinical trials and discuss them with his or her oncologist and loved ones. Clinical trials are not for everyone, making it essential to weigh all factors carefully.

If a patient is considering participating in a clinical study, consult with a HOPE Cancer Center of East Texas oncologist. He or she can recommend trials that may be most appropriate for the patient and answer any additional questions they may have.

At HOPE Cancer Center of East Texas, our friendly, caring and highly experienced oncologists are committed to finding cures for cancer. One important way we are helping advance the fight against cancer and making a difference is by participating in the investigation of next-generation, anti-cancer medicines through clinical trials.





Psychosocial Distress Screening

The UT Health East Texas Cancer Institute provides several programs to meet the psychosocial and educational needs of cancer patients and their families. The diagnosis of cancer and its treatment often creates a major crisis for individuals and families that results in psychosocial problems. Most patients and family members experience anxiety, fear and a feeling of hopelessness when they hear the words “you have cancer.” Uncertainty of what is to follow can be as devastating as the dreaded diagnosis. A critical component of treatment is the availability of a comprehensive support program to assist patients and families as they struggle to cope with diagnosis, fears, treatment and outcomes. The social worker will be contacted by a healthcare professional, if indicated by the distress screening tool (moderate to severe stress) and/or clinically indicated.

This evaluation will confirm the presence of physical, psychological, social, spiritual and financial support needs and indicate the need to link patients with psychosocial services offered by referral.

When community psychosocial resources are designated as the most appropriate resource to meet the patient or family needs, referrals are made by physicians, nursing staff, clinical social workers or other staff.

Counseling Services

Individual, marital or family counseling is offered to provide patients and families with improved coping and communication skills. Counseling sessions are available by appointment for the inpatient unit, radiation oncology and breast care centers.

Support Groups

The HOPE Cancer Center of East Texas offers a general support group on the third Thursday of every month to assist in dealing with the emotional impact of cancer. These groups bring patients, survivors, caretakers and family members together for encouragement, education and emotional support. At each support group meeting, a licensed family therapist attends to evaluate the session.

Breast Care Center

The UT Health East Texas Breast Care Center continues its mission of early breast cancer detection through a dedicated, compassionate, personalized and comprehensive breast care program. We offer a full range of services for screening and early detection of breast cancer including diagnostic and screening mammograms, diagnostic and screening breast ultrasounds, stereotactic biopsies, ultrasound-guided biopsies, breast MRI, cyst aspirations, hook-wire placements, sentinel lymph node injections and galactograms. Bone density testing also is available at the breast care center.

The two radiologists at the breast care center are Michael J. Klouda, MD, and Brandon Ashton, MD. Dr. Klouda is board certified in diagnostic radiology. He earned his doctor of medicine from Rush Medical College in Chicago and completed a fellowship in breast imaging at The University of Chicago. Dr. Ashton is board certified in radiology and mammography, and earned his doctor of medicine from The University of Texas Medical Branch in Galveston and completed a fellowship in breast imaging at Vanderbilt Medical Center in Nashville.



Michael J. Klouda, MD

Medical Director, UT Health East Texas
Breast Care Center



Brandon Ashton, MD

Radiologist, UT Health East Texas
Breast Care Center

One of the greatest assets any breast cancer screening program can offer is its personnel. The certified mammography technologists who staff our breast care center and mobile mammography unit boast more than 110 years of combined experience in breast imaging. All patients receive personalized, one-on-one interaction with a technologist who understands their apprehension regarding this necessary screening exam.

Along with obtaining mammographic images, our technologists collect information from each patient regarding their family's cancer history. Genetic testing is offered to patients who meet certain criteria. For example, if a woman falls into the 'high-risk' category, meaning her lifetime risk to develop breast cancer is greater than 20 percent, then screening contrast-enhanced magnetic resonance mammography is available to her each year.

The National Comprehensive Cancer Network recommends screening with mammography, plus breast MRI for some women at higher risk of breast cancer, especially including women with a positive genetic mutation, a first-degree relative with a BRCA 1 or 2 mutation, radiation treatment to the chest area between ages 10-30 and a greater than 20 percent lifetime risk of invasive breast cancer. The breast care center genetic educator accepts referrals from primary care providers and evaluates each woman based on family history to determine if she meets criteria for genetic testing and/or high-risk management.

Screening ultrasounds are offered as a supplemental test in conjunction with screening mammograms for women with dense breast tissue. Dense breasts have more fibrous and glandular tissue than fatty tissue, which can make it difficult for a radiologist to spot cancer on a mammogram. Studies have shown that ultrasound and MRI can help find breast cancers that cannot be seen on a mammogram.

The mobile mammography unit continues to make screening mammograms available throughout the region. Digital breast tomosynthesis, also known as 3-D mammography, is a new and revolutionary screening and diagnostic breast imaging tool to improve the early detection of breast cancer, and is now available on the mobile mammography unit. During the 3-D part of the exam, an X-ray arm sweeps over the breast, taking multiple images in seconds. Images are displayed as a series of thin slices that can be viewed by our radiologists as individual images or in a dynamic interactive animation. Of all breast cancers detected at the breast care center, 15 to 20 percent received screening mammograms via the mobile service. We work with the Susan G. Komen Foundation and the Breast and Cervical Cancer Program to provide services to uninsured patients.

The East Texas Pin-A-Sister™ program is a faith-based breast cancer awareness program targeting African-American women in Smith County. The program began in 2010, and since its beginning, over 11,000 women have participated in East Texas Pin-A-Sister™. Attendees receive health information on the importance of obtaining an annual screening mammogram and knowing their family health history.

Of all the breast cancers diagnosed at the UT Health Breast Care Center, 53 percent were stage 0 and stage I. Early diagnosis affords many women the option of choosing among various therapies to treat their cancer, in addition to providing the obvious survival benefits.

Regina Davis, MHA

Director, UT Health East Texas Breast Care Center



Cancer Data Services

The cancer data services department (cancer registry) of the UT Health East Texas Cancer Institute is a case-specific database with detailed information about each patient's type of cancer. The registry is a central component of UT Health East Texas and it plays a large role in improving quality through retrospectively analyzing patterns and trends in the diagnosis and treatment of cancer. The registry identifies cancer patients seen at UT Health by utilizing a computer software program (IMPAC Medical Systems-METRIQ) designed especially for cancer data collection. We collect extensive data on each patient, including demographic data, diagnostic findings, primary site of malignancy, histology, stage of disease, treatment and survival data.

In 2017, the registry databases at UT Health Tyler and UT Health Athens recorded 1,314 new cancer cases. Since our reference date of January 1996, a total of 22,653 cases have been accessioned into the registry. We follow 14,523 patients for a lifetime. Our successful follow-up rate since registry date is 85.93 percent, and for the past five years of analytic cases the follow-up rate is 90.54 percent. We report statistical information to the Texas Department of Health Cancer Registry Division and to the National Cancer Database. We also post our annual statistics to the American Cancer Society's website for public viewing. The statistical information reported to the State Registry and National Cancer Database is used for research purposes to gain insight into cancer incidence and to assess effective treatment modalities for cancer.

The cancer data services personnel are active members in the National Cancer Registrar Association and the Texas Tumor Registrars Association. We also participate in the monthly North American Association of Central Cancer Registries educational webinars and the Annual East Texas Regional Workshop for Registrars. The cancer data services staff actively participates in the quarterly cancer committee meetings and weekly prospective treatment planning conferences. We participate in the American College of Surgeons' Cancer Program Practice Profile, Rapid Quality Reporting System and National Cancer Database Comparison Benchmark, as well as in-house audits, which monitor quality of patient care.

The approved cancer program benefits patients, the professional staff members, the hospital and the community through:

- Institutional commitment to the provision of high-quality cancer care.
- Access to multidisciplinary consultation.
- Annual follow-up.
- Availability of registry data.
- Educational programs.
- Comparison of regional clinical experiences with national data.
- Research protocols.
- Cancer resources/patient counseling.
- Ongoing cancer screening programs.
- High-quality multidisciplinary care available close to home.

The cancer data services department is a service designed to promote the continuity of quality care for cancer patients. Great emphasis is placed on high-quality cancer registry data and a foundation for future analyses at the UT Health Cancer Institute.

Cancer Data Services Personnel

Almarie Moore, CTR

Cancer Data Services Manager

Sandy Spurbeck

Cancer Registry Abstractor

Dena Wright

Registry Assistance

Kristen Steinbrecher

Cancer Registry Abstractor

Quince Miller

Cancer Registry Abstractor

2017 Summary of Program Components

1,314 New Cancer Cases Accessioned

502 Total Licensed Beds

36 Oncology Beds

33 Full-time Oncology Nurses

Oncology Certified Nurses

Medical Oncology/Hematology

Radiation Oncology

Pathology

Diagnostic Radiology

General Surgery

Specialized Surgery

Community Hospital Comprehensive
Oncology Program

Components of UT Health East Texas Cancer Institute's ACoS Approved Cancer Program

Multidisciplinary Cancer Committee

General Weekly Prospective Treatment Planning
Conferences

Site-Specific Weekly Prospective Breast Cancer
Treatment Planning Conference

Site-Specific Weekly Prospective Lung Cancer
Treatment Planning Conference

Clinical Trials

Continuing Medical Education

Cancer Resources/Patient Counseling

Breast Care Center with Mobile Mammography Unit

Patient Care Evaluations

Fully Computerized Cancer Registry

2017 Prospective Treatment Planning Conferences Primary Cancers Presented

Sites Discussed

Adrenal	1
Anal	1
Appendix	1
Bladder/Renal Pelvis/Ureter	1
Bone Marrow	1
Brain	26
Breast	317
Colorectal	16
Esophagus	4
Gallbladder	1
Gastric/Stomach	1
GYN	5
Head & Neck, NOS	1
Hodgkin's/Non-Hodgkin's	4
Kidney	4
Liver	7
Lung	208
Melanoma	1
Nasopharynx	1
Pancreas	4
Prostate	1
Skin	2
Small Intestine	1
Soft Tissues	5
Stomach	1
Testicle	1
Thyroid	2
Unknown Primary	7
Total	625



Primary Site	Analytic Cases	Non-Analytic Cases	Total Cases
Oral Cavity/Pharynx	42	19	61
Tongue	18	9	27
Salivary Gland	5	1	6
Mouth	8	3	11
Tonsil	5	5	10
Nasopharynx	1		1
Oropharynx	3	1	4
Hypopharynx	2		2
Digestive System	237	80	317
Esophagus	19	8	27
Stomach	16	7	23
Small Intestine	8	1	9
Anus, Anal Canal & Anorectum	7	2	9
Liver & Intrahepatic Bile Duct	32	10	42
Gallbladder	3	1	6
Other Biliary	4		4
Pancreas	27	11	38
Retroperitoneum	2		2
Peritoneum, Omentum & Mesenteric	1		1
Other Digestive Organs	3		3
Colon	79	26	105
Cecum	13	3	16
Appendix	4	2	6
Ascending Colon	14	3	17
Hepatic Flexure	4	1	5
Transverse Colon	8	3	11
Descending Colon	4	3	7
Sigmoid Colon	29	7	36
Large Intestine, NOS	3	4	7
Rectum & Rectosigmoid	36	14	50
Rectosigmoid Junction	9	5	14
Rectum	27	9	36
Respiratory System	284	116	400
Larynx	12	8	18
Lung & Bronchus	271	108	379
Trachea, Mediastinum & Other	1		1
Bone and Joint	1	1	2

Primary Site	Analytic Cases	Non-Analytic Cases	Total Cases
Soft Tissue	4	6	10
Skin (excluding Basal & Squamous)	11	8	19
Melanoma — Skin	10	8	18
Other Non-Epithelial Skin	1		1
Breast	194	49	243
Female Genital Organs	32	17	49
Cervix Uteri	3	3	6
Corpus Uteri/Uterus/Vulva	13	3	16
Ovary	16	11	27
Male Genital Organs	99	30	129
Prostate	92	29	121
Testis	5	1	6
Penis	2		2
Urinary System	139	26	165
Bladder	70	16	86
Kidney/Renal Pelvis	67	8	75
Ureter	2	2	4
Eye & Orbit		1	1
Central Nervous System	56	11	67
Brain	26	5	31
Meninges/Other CNS	30	6	36
Endocrine System	27	7	34
Thyroid	16	1	17
Other Endocrine Glands including Thymus	11	6	17
Lymphoma	65	28	93
Hodgkin's	7	4	11
Non-Hodgkin's Lymphoma	58	24	82
Lymphatic/Hematopoietic	60	33	93
Leukemia	39	25	64
Myeloma	21	8	29
Miscellaneous Sites	63	23	86
Total Number of New Cases for 2017	1,314	455	1,769

2017 Five Major Sites Total Analytic Cases 1,314

SITE	UT Health East Texas	TEXAS	NATIONAL
Bladder	74 (5%)	5,250 (4%)	72,240 (5%)
Breast	211 (15%)	17,060 (15%)	252,710 (15%)
Colorectal	136 (9%)	9,690 (8%)	135,430 (88%)
Lung	305 (21%)	14,560 (13%)	222,500 (13%)
Prostate	86 (7%)	12,550 (10%)	161,360 (9%)

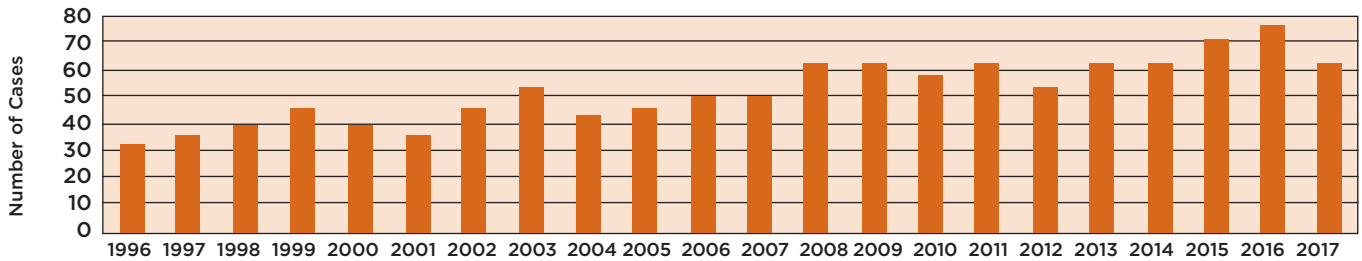
Source: Texas & United States - American Cancer Society

2017 Cancer Facts and Figures by State (Total New Cases: 121,860)

2017 Cancer Facts and Figures by United States (Total New Cases: 1,735,350)

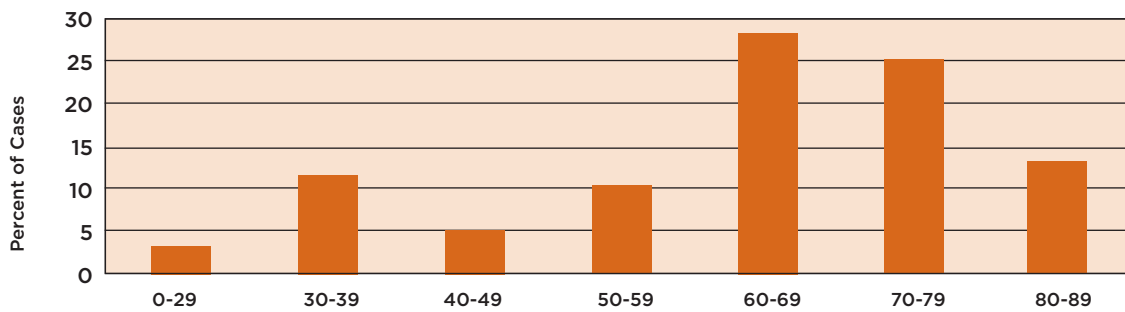
Number of New NHL/Hodgkins Cases

Annually Diagnosed at UT Health East Texas Cancer Institute



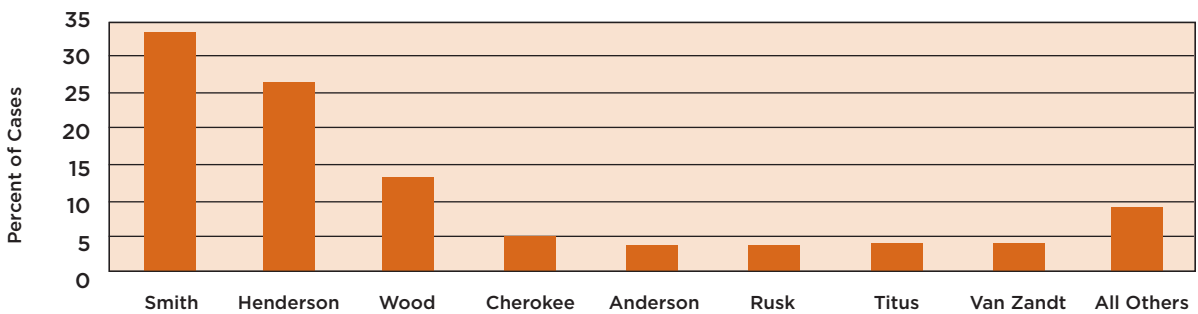
Distribution by Age at Diagnosis

2017 Total Analytic Lymphoma (60 Analytic Cases)



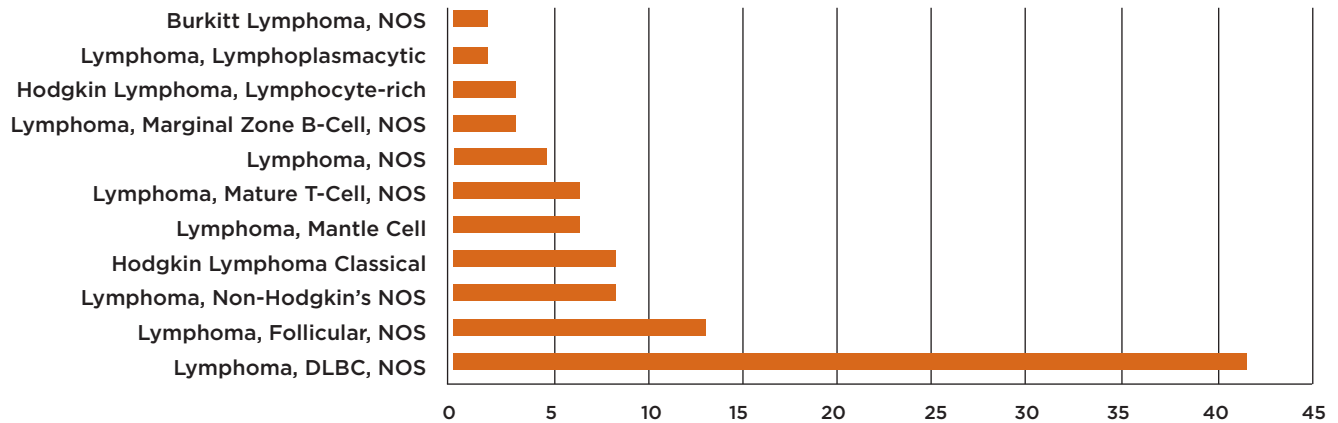
UT Health East Texas Cancer Institute Distribution by State/County

2017 NHL/Hodgkin's Lymphoma (59 Total Analytic Cases)



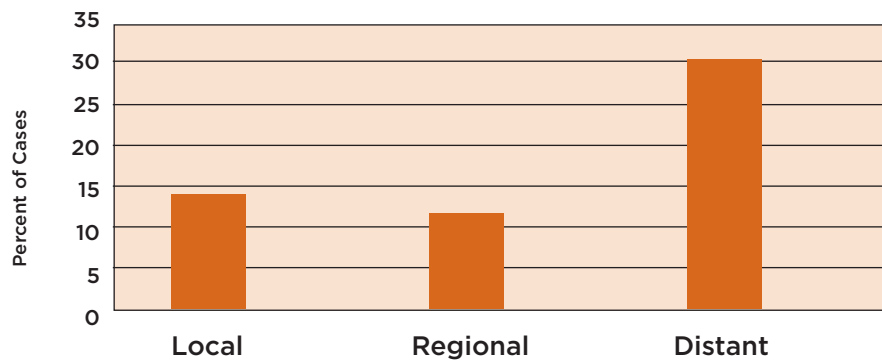
Distribution by Histology

2017 Analytic Lymphoma UT Health East Texas Cancer Institute



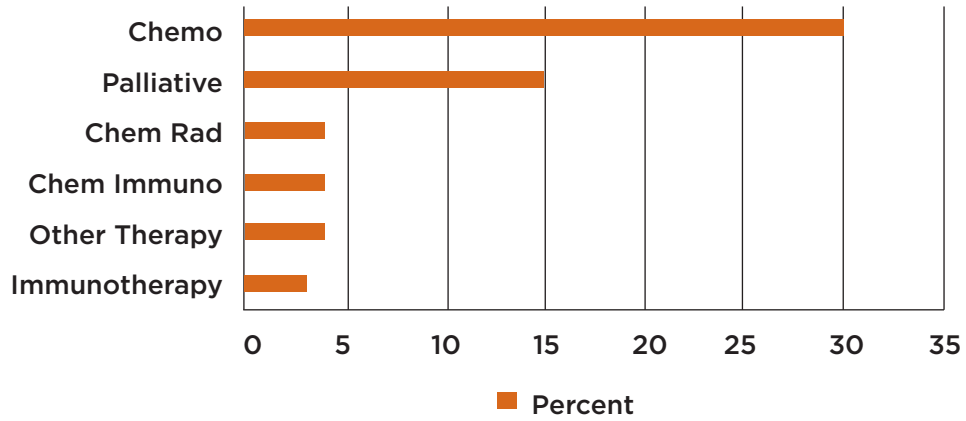
UT Health East Texas Cancer Institute Distribution by General Summary Stage

2017 Total Analytic Lymphoma

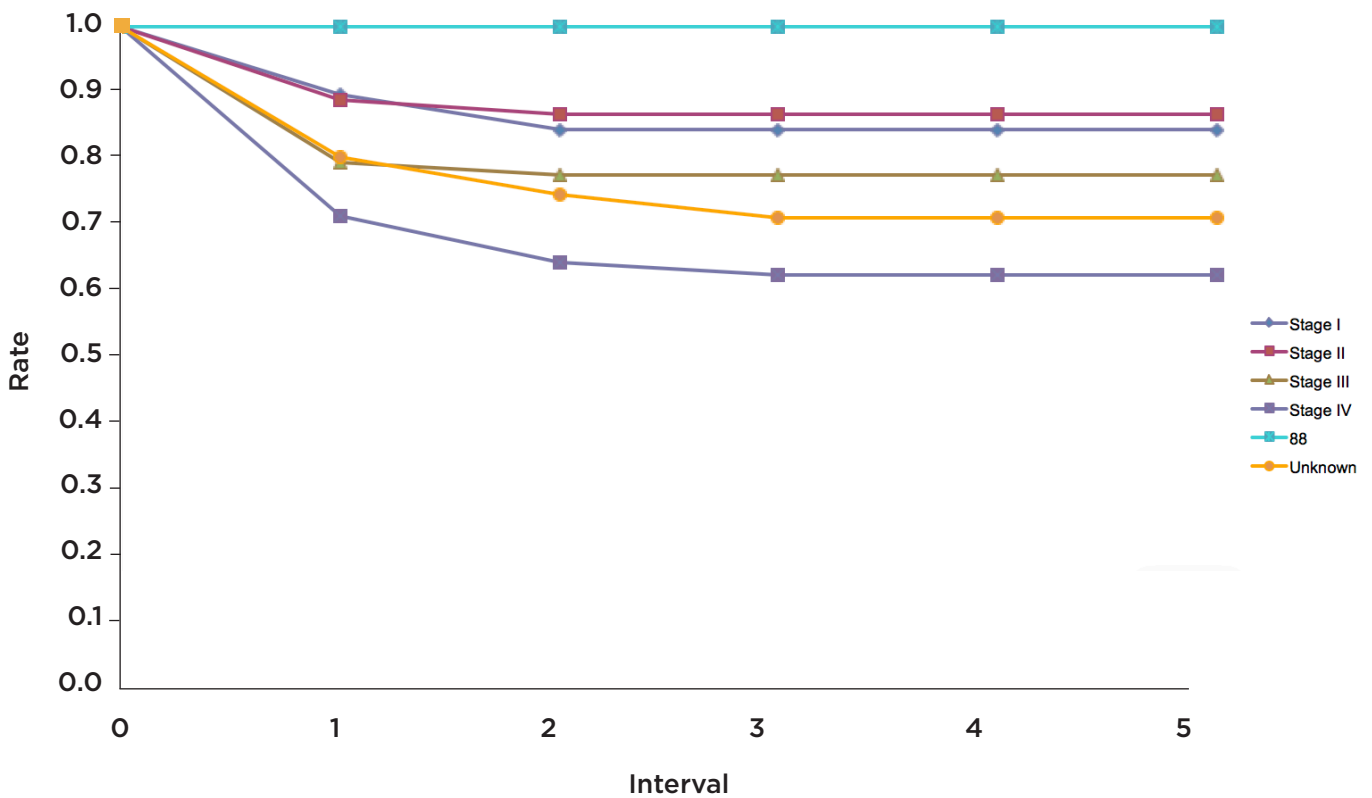


UT Health East Texas Cancer Institute Distribution by Initial Therapy

2017 Total Analytic Lymphoma



Relative Survival by Best American Joint Committee on Cancer (AJCC)



Letter of Thanks

The Journey

A letter of gratitude, written by a former patient.

It seems like yesterday when they wheeled my husband Lenny*, who was diagnosed with leukemia, from the emergency room to 6 North in January 2017. We were greeted with smiles from nurses, clerks, advocates, kitchen staff, housekeeping staff and PCAs. That's when our journey began at UT Health East Texas, not knowing we would spend the next eight months there. As we smiled back, I wondered if they could see our concern through our smiles. I thought to myself, how can I ever find the words to say to the group of nurses and PCAs on every shift that knew our world was turned upside down from the beginning, but still made us feel like family? I wish I could remember every nurse, charge nurse, doctor, clerk and PCA by name, to give them a special thank you. From all the pills, IVs, fluids and chemo given, the nurses always did it as though they truly cared. There was a nurse, Cathy*, and a charge nurse, Carla*, on day shift that we adopted as our guardian angels. The staff on every shift was always kind, encouraging and did everything to make Lenny feel comfortable and safe in a bad situation. I know I can speak for Lenny to say thank you to the 6 North staff for the good nursing care, love and professionalism you gave during our stay at UT Health.



** Names have been changed.*

HOPE Cancer Center

Few things will have as dramatic an effect on your life as learning that you have cancer.

Having helped East Texans fight cancer for more than 30 years, we understand how cancer diagnosis and treatment can impact your life.

As a regional authority on cancer care and treatment, HOPE Cancer Center of East Texas provides today's most advanced treatments, clinical trials and the highest standard of care.

Our doctors are the reason behind our reputation for excellence. Our oncologists are double-and triple-board-certified specialists who trained at some of the most prestigious cancer treatment institutions in the country. With diverse skill sets and vast experience in treating cancer, our physicians are recognized as leaders in cancer care in East Texas.

We are governed by and make decisions based on our commitment to excellent medicine and unsurpassed patient care. It also means our oncologists collaborate with one another and coordinate the patient's care with other physicians and caregivers. Our track record for success is driven by independence and leading with our hearts.

Our physicians are on the attending staff of UT Health Tyler and CHRISTUS Trinity Mother Frances Hospital. We also are on the consulting staff of UT Health hospitals in Athens, Henderson and Jacksonville, as well as UT Health Specialty Hospital and the UT Health Rehabilitation Center.

Michael Y. Ashigbi, MD

Board Certified: Internal Medicine, Hematology, Medical Oncology

Professional Degree: University of Ghana Medical School

Myrtha E. Basile, MD

Board Certified: Hematology, Medical Oncology

Professional Degree: University of Pittsburgh

Robert M. Droder, MD

Board Certified: Internal Medicine, Hematology, Medical Oncology

Professional Degree: Hahnemann University College of Medicine

Katrina Y. Glover, MD

Board Certified: Internal Medicine, Medical Oncology

Professional Degree: University of Texas Southwestern Medical School

Arielle S. Lee, MD

Board Certified: Internal Medicine, Hematology, Hospice and Palliative Medicine, Medical Oncology

Professional Degree: Baylor College of Medicine

Joseph T. Martins, MD

Board Certified: Internal Medicine, Hematology, Medical Oncology

Professional Degree: University of Texas Southwestern Medical School

Shawn V. Tai, MD

Board Certified: Internal Medicine, Medical Oncology

Professional Degree: Ross University School of Medicine

Marc E. Usrey, MD

Board Certified: Internal Medicine, Hematology, Medical Oncology

Professional Degree: University of Texas Medical School at Houston

J. Brice King, FNP-C

Master of Science in Nursing, Family Nurse Practitioner

Bachelor of Science in Nursing

Master of Science in Biomedical Science

Bachelor of Science, Biology

Annala J. Shirley, AGNP-C

Post-Master's Certificate, Primary Care Nurse Practitioner

Master of Business Administration

Master of Nursing

Bachelor of Science in Nursing



HOPE
CANCER CENTER
OF EAST TEXAS

Expertise. Experience. Compassion. HOPE.

Athens
903-675-1322

Cedar Creek Lake
903-802-7800

Henderson
903-3928150

Jacksonville
903-5891327

Tyler
903-592-6152

www.HopeCancerTexas.com



On the Road Again

UT Health East Texas Breast Care Center mobile mammography program reaches out to the women of East Texas.

The mobile mammography program was established in 1996 to bring services to rural communities in East Texas. Today, more than 2,400 women are screened annually through this program. The mobile unit travels to various school districts, churches and businesses in Carthage, Canton, Chandler, Grand Saline, Gilmer, Lake Palestine, Lindale, Malakoff, Mount Vernon, Mineola, Quitman, Rusk and Sulphur Springs. As the program fills in the “gaps” throughout East Texas where mammograms are not normally available, it helps ensure that women in rural areas are able to follow the established mammography screening guidelines. “We have found so many groups that benefit from this service, such as rural residents, working women, minority populations and women who have limited access to transportation,” said Regina Davis, director of the UT Health East Texas Breast Care Center and the mobile mammography program. “One of the positive aspects of mobile mammography is its flexibility. We continually adjust our schedules to meet community needs.” She stated that last year, more than 2,000 women received mammograms through the mobile service.

Aboard the mobile mammography unit is a driver and a highly skilled female mammography technologist. The technologist talks with each woman before her mammogram, recording the woman’s personal medical history and family history involving cancer. The entire procedure usually takes about 15 minutes from start to finish.

Access to genetic testing also is available to women receiving services on the mobile unit. “The women are very grateful that we come to them,” said Michael Klouda, MD, board-certified radiologist and medical director of the UT Health East Texas Breast Care Center. “In some cases, these women probably would not receive mammograms without the mobile mammography service. Through the mobile unit, we have found several small but aggressive cancers. By catching them and providing treatment, we have made a big difference in the lives of these women and their families.”

In July of 2018, UT Health East Texas unveiled a new mobile mammography coach featuring 3-D technology, which significantly increases the detection of breast cancers. The new mobile mammography coach offers the Genius™ 3-D mammography exams, developed by Hologic Inc., and the new SmartCurve™ breast stabilization system, which helps improve patient comfort.

“In conventional 2-D mammography, overlapping tissue is a leading reason why small breast cancers may be missed, and normal tissue may appear abnormal, leading to unnecessary callbacks,” said Dr. Klouda. “The Genius exam includes a three-dimensional method of imaging that can greatly reduce the tissue overlap effect. It includes both 2-D images and tomosynthesis scans. “During the tomosynthesis dimensional portion of the exam, an X-ray arm sweeps in a slight arc over the breast while taking multiple images,” Dr. Klouda said. “A computer converts the images into a stack of thin layers, allowing the radiologist to review the breast tissue one layer at a time. The exam requires no additional compression and takes only a few seconds longer than a conventional 2-D breast cancer screening exam.”

The UT Health East Texas mobile mammography coach also offers SmartCurve™, which features a proprietary curved surface that mirrors the shape of a woman’s breast, to reduce pinching and allow better distribution of force over the entire breast. In a recent study, the SmartCurve™ system improved comfort in 93 percent of women who reported moderate to severe discomfort with standard compression.

“Some women don’t receive a mammogram because they don’t like any pain associated with the exam. With this new system, we believe patients will be more comfortable and hopefully more willing to come in for their annual check-up,” said Davis. “We have found that so many people benefit from this service, especially rural residents, working women and patients with limited access to transportation,” she said. “Women can call our scheduling center to find out when the mobile unit is coming to their community and make an appointment. We also take walk-ins, if appointment slots are available.”

The mobile unit, along with its new technology, cost more than \$1.5 million. This purchase was made possible through gifts from the former East Texas Medical Center Foundation, the Ann White Fleming Fund and the Poindexter Cancer Fund.